



## SameSky Health Newsletter

### Issue 1

Welcome to the first issue of the SameSky Health™ newsletter! Our goal is to keep you informed and inspire you with all things related to advancing health equity.

We are looking forward to connecting with you each month, so if you're as excited as we are, please read on and share with your colleagues.

---

### SameSky Health receives honors from MuleSoft and Amazon Web Services

SameSky Health has received two notable achievements in the past month, helping us to rapidly innovate and advance our technology.

We are pleased to share that we were awarded the 2022 MuleSoft Social Impact Award for North and South America. We received recognition for driving innovation using MuleSoft as our main data orchestration tool. We were able to build a data ingestion platform in fewer than five months for a timely and successful launch of our CultureGuide™ solution. Selected from among 70 submissions, SameSky Health was one of nine award recipients. To learn more, [read our press release announcement](#).

We are also excited to share that SameSky Health received a sponsorship from the Amazon Web Services (AWS) Health Equity Initiative. We received this for our plan to leverage Amazon Alexa to connect Medicaid and



### What actions should health plan leaders prioritize to advance health equity?

**Watch** as SameSky Health Founder and CEO, Abner Mason, talks about three things health plan leaders should prioritize to create a healthier, more equitable world.

---

### Upcoming Events

We'd love to connect with you in person and virtually! Check out our upcoming events below:

- **Aug 21:** CIVITAS Networks for Health Annual Conference
- **Sep 12:** Under the SameSky on LinkedIn Live featuring Wellth
- **Sep 14:** MHPA 2022 Medicaid Managed

Medicare members with culturally adapted support.

[Learn more about this sponsorship here.](#)

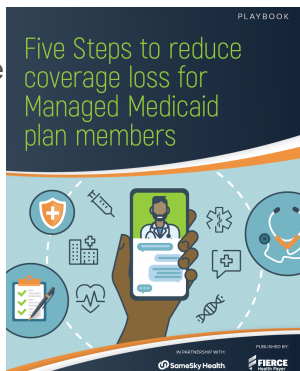
---

## Latest thinking: Is your health plan prepared for the unwinding of the PHE?

It is likely that the US Department of Health and Human Services will extend the public health emergency (PHE) again. While unwinding the PHE is a moving target, your plan to help your Medicaid members shouldn't be.

Learn the most important steps you can take to reduce coverage loss for your members — along with context, background, facts, and figures to help understand what's ahead when the public health emergency ends.

[Download our playbook.](#)



care: driving equity, delivering value, improving lives

- [Sep 20:](#) Fierce Healthcare webinar: A member-centric approach to prepare for unwinding of the PHE
- [Sep 20-22:](#) Dreamforce

[View](#) a full list of upcoming events on our website.



[Forward to a Friend](#)



[Follow us on LinkedIn](#)



[Follow us on Twitter](#)

---

## LinkedIn Live: Under the Same Sky

Each month, join us as we explore advancements in health equity with other industry experts.

Our Founder and CEO, Abner Mason had a great conversation with Salesforce Chief Medical Officer, Dr. Geeta Nayyar, and CEO and Founder of alvee, Nicole Cook. Together, they discussed how technology can be leveraged to advance health equity. If you missed it, you can [view the recording](#).

Our next episode will be on Monday, September 12 at 11:00 AM PT and will feature guest speaker Matt Loper, CEO and co-founder of Wellth. Matt will talk about the concept of member incentives as member investments.

[Learn more.](#)



[Follow us on Twitter](#) | [Follow us on LinkedIn](#)

Copyright © 2022, All rights reserved.

Our mailing address is:

SameSky Health  
5200 Lankershim Blvd  
Suite 310  
North Hollywood, CA 91601

This email was sent to [jacqueline.critchlow@sameskyhealth.com](mailto:jacqueline.critchlow@sameskyhealth.com) by SameSky Health.  
If you no longer wish to receive emails from SameSky Health, you can [update subscription preferences or unsubscribe](#).